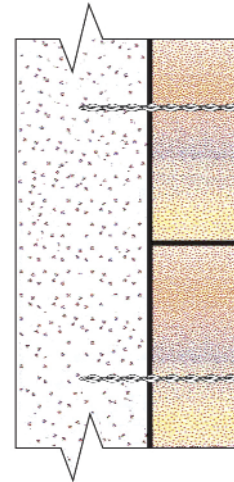


RT06

# Reconnecting Limestone / Sandstone / Travertine / Granite/ Marble to Concrete using DryFix®

## METHOD STATEMENT

1. Mark the position for the DryFix ties on the veneer.
2. Drill an appropriate diameter pilot hole (depending on diameter of DryFix tie and density of back-up material. See Specification Note 'C' below) through the limestone and into the concrete, to a predetermined depth, using a rotary percussion drill (3-jaw-chuck type).
3. Fit the special Power Driver Attachment (PDA) to an electric hammer drill (SDS type).
4. Load the DryFix tie into the PDA.
5. Power-drive the tie into position until its outer end is recessed below the face of the veneer by the PDA.
6. Make good the entry hole with color matched materials to meet the requirements of the site.

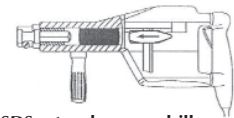


## RECOMMENDED TOOLING

For drilling pilot hole .....Rotary percussion 3-jaw-chuck type drill  
For installing DryFix .....DryFix Power Driver Attachment fitted to SDS rotary hammer drill 650w/700w



Rotary percussion  
3-jaw-chuck-type drill



SDS rotary hammer drill

## Specification Notes

The following criteria are to be used unless specified otherwise:

- A. Length of DryFix ties to be sufficient accommodate width of limestone + width of any void + 2" into the concrete
- B. Ensure pilot hole goes a minimum of 3" into the concrete
- C. Diameter of pilot hole to be determined on site – typically:  
5–6mm for 8mm diameter tie  
7–8mm for 10mm diameter tie
- D. Tie spacing to be determined by the project engineer in accordance with individual site conditions

The above specification notes are for general guidance only and Helifix reserves the right to amend details/notes as necessary.

## GENERAL NOTES

If your application differs from this repair detail or you require specific advice on your particular project, call Helifix toll free on **888-992-9989**. Our Technical Department can provide you with a full support service including:

- Advice, assistance and recommendations on all structural repair matters
- Devising and preparing complete repair proposals for specific situations

# HELIFIX

SUSTAINABLE STRUCTURAL SOLUTIONS

A division of HALFEN USA Inc. • P.O. Box 547  
Converse, TX 78109 • inquiry@helifix.com

Toll Free: 888-992-9989 • Fax: 877-683-4910

[www.helifix.com](http://www.helifix.com)



**HALFEN**  
YOUR BEST CONNECTIONS